

SELF MEASURING FORM



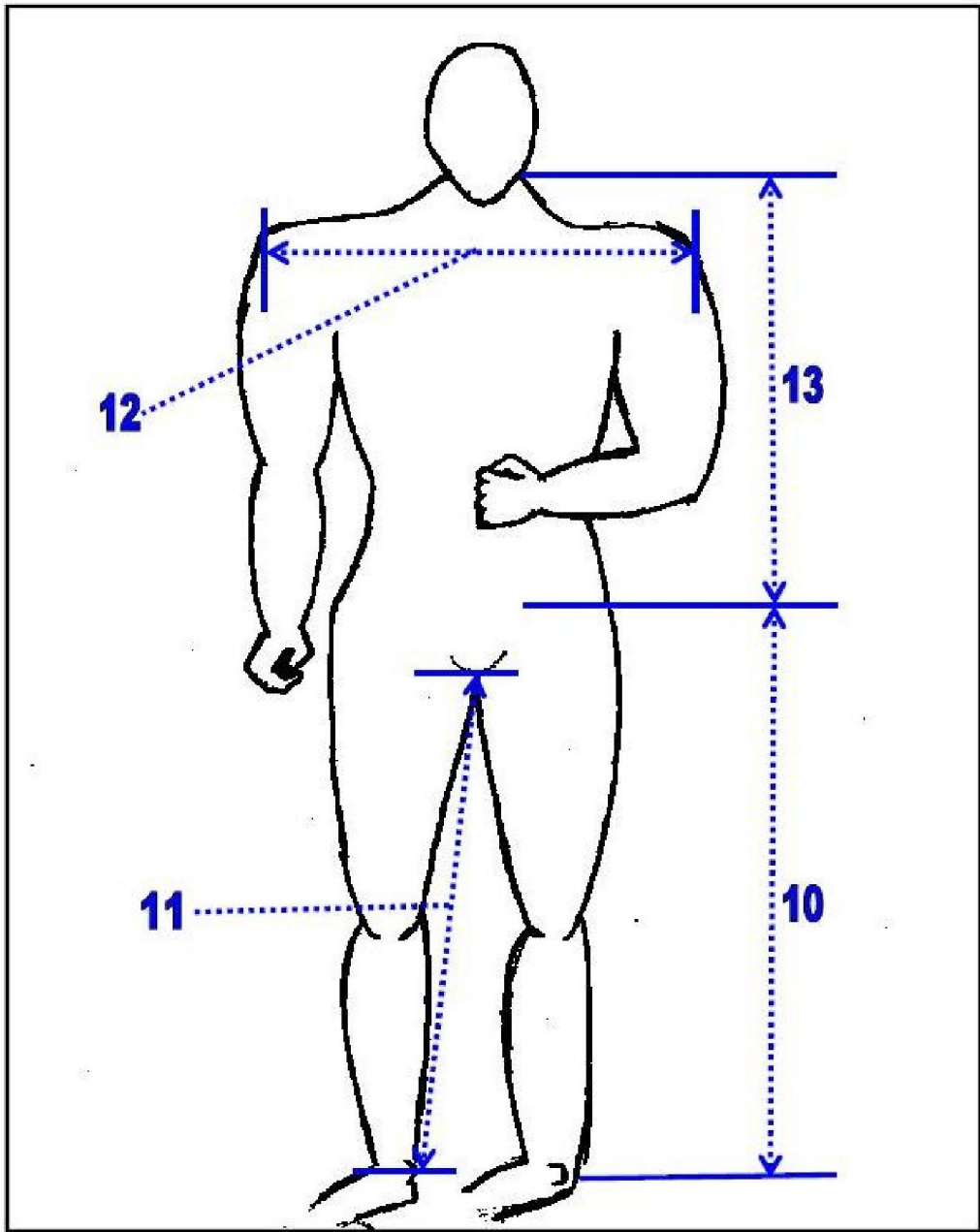
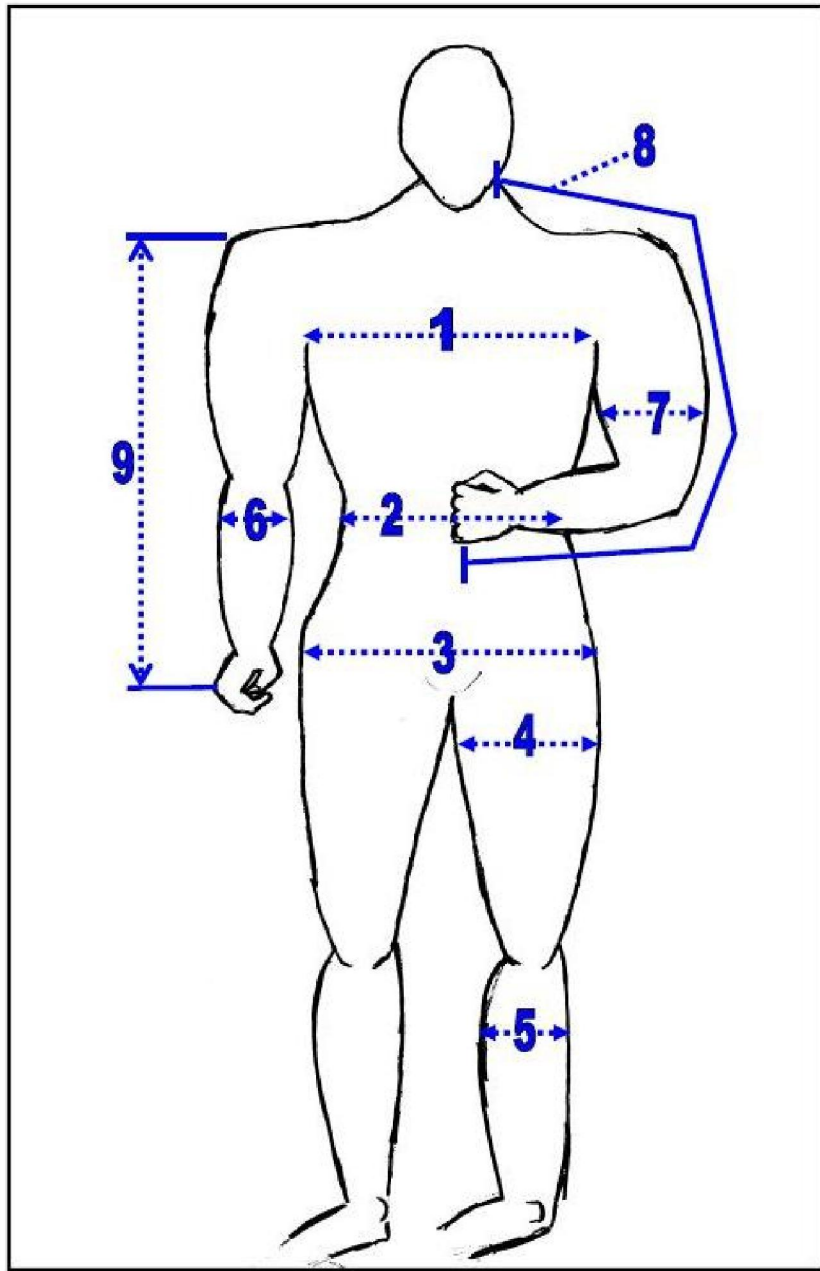
Name	
Address	
Country	
Tel	
Cell Phone	
Fax	
E-mail	
Date	

Sex	<input type="checkbox"/> male
	<input type="checkbox"/> female
Weight	KG
Height	CM

Belgian ring full suit	
Belgian ring jacket	
Belgian ring trousers	
mondio / French ring competition full suit	
mondio / French ring competition jacket	
mondio / French ring competition trousers	
mondio / French ring semi training full suit	
mondio / French ring semi training jacket	
mondio / French ring semi training trousers	
mondio / French ring training full suit	
mondio / French ring training jacket	
mondio / French ring training trousers	

Have another person measure you. Your bite suit will fit to the measurements that you supply us. Perfection is essential in quality bite suits, so please be sure that the measurements are accurate. Take all measurements wearing the clothes that you will use under the bite suit usually. Give exact measurements, we will make any allowances necessary. Stand up straight while you are being measured.

kimono training full suit	
kimono training jacket	
civil hidden suit	
under jacket body	
under jacket body with sleeves	
under trousers	

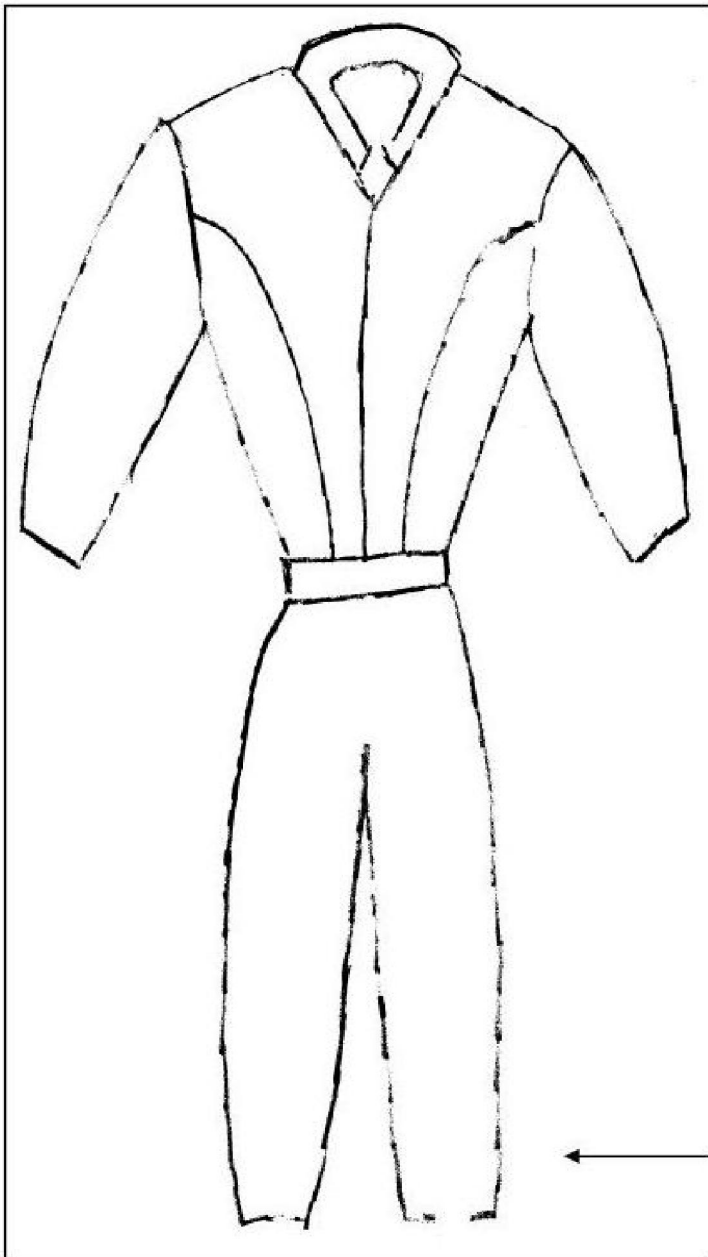


PLEASE TYPE ALL MEASURING INFORMATION. PSD IS NOT RESPONSIBLE FOR MEASURING ERRORS. ALL MEASUREMENTS MUST BE DONE IN CM AND WEIGHT CALCULATED IN KG. IF YOU WOULD LIKE A BETTER FITTED SUIT, DO NOT WEAR HEAVY CLOTHING WHEN BEING MEASURED. IF THE SUIT NEEDS TO BE RETURNED DUE TO MEASURING ERRORS, ANY EXPENSES INCURRED WILL BE AT THE BUYER'S EXPENSE.

NUMBER	DESCRIPTION	MEASURE
1	CHEST - circumference (largest arm pit height)	CM
2	WAIST - circumference (at level of the navel)	CM
3	HIPS - circumference (largest across backside)	CM
4	THIGH - circumference (largest)	CM
5	CALF - circumference (largest)	CM
6	FOREARM - circumference (largest)	CM
7	BICEP - circumference (largest)	CM
8	NECK TO END OF SLEEVE - Look straight ahead and bend the arm at front of the body. Measure length from side of neck under the ear over the top of shoulder and over the outside of the elbow to the place where you want the sleeve to end.	CM
9	SLEEVE - Look straight ahead and measure at the side from top of shoulder to where you want the sleeve to end.	CM
10	OUTSEAM - Measure from side of waist at level of the navel to the ankle.	CM
11	INSEAM - Measure from crotch to ankle.	CM
12	SHOULDERS - Measure shoulders at the back of the body from one side to the other.	CM
13	JACKET LENGTH - Measure from nape of neck to where you want the jacket to end.	CM



<u>SPECIAL SPECIFICATIONS</u>	
WEIGHT :	KG HEIGHT: CM



Belgian ring suit

Mondio / French ring suit

YELLOW

DEEP RED

ROYAL BLEU

BLACK

BORDEAUX

FLUO ORANGE

ALMOND GRAY

WHITE

ARMY GREEN

CAMOUFLAGE

2 TONE MODEL

BASIC MODEL

